

ALL-OVER PRINT UNISEX WIDE LEG PANTS

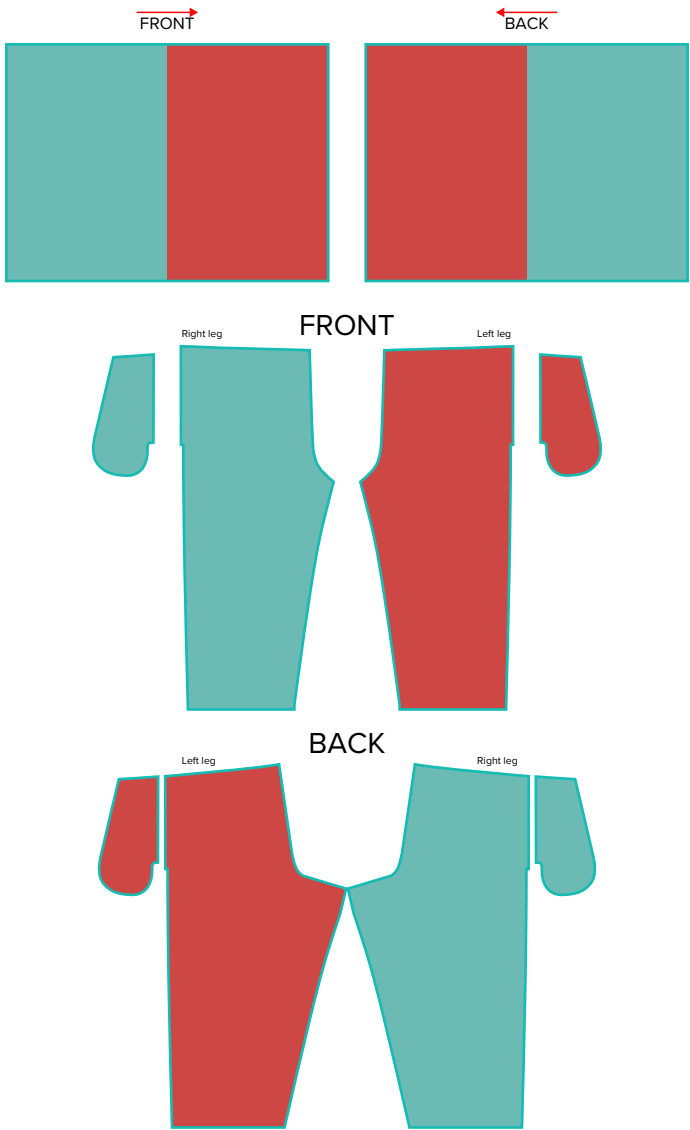
Print file size for
FRONT AND BACK

68" × 50"
width height

PRINT FILES

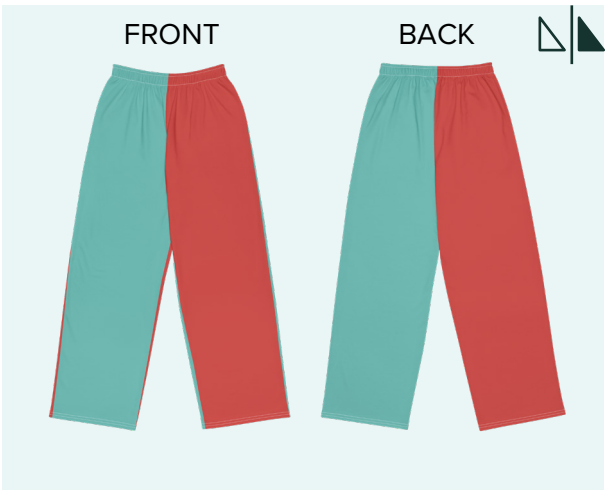
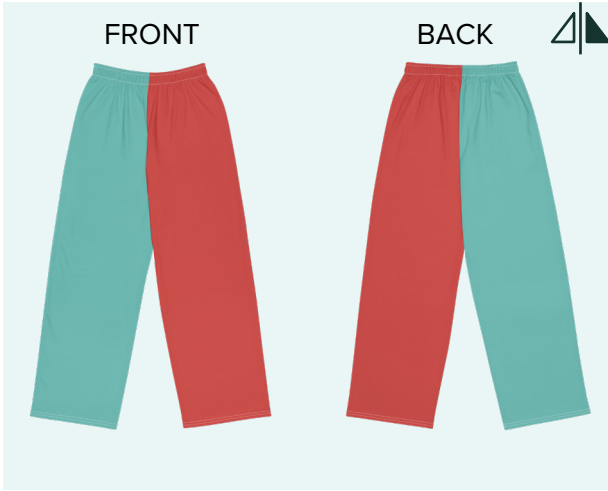
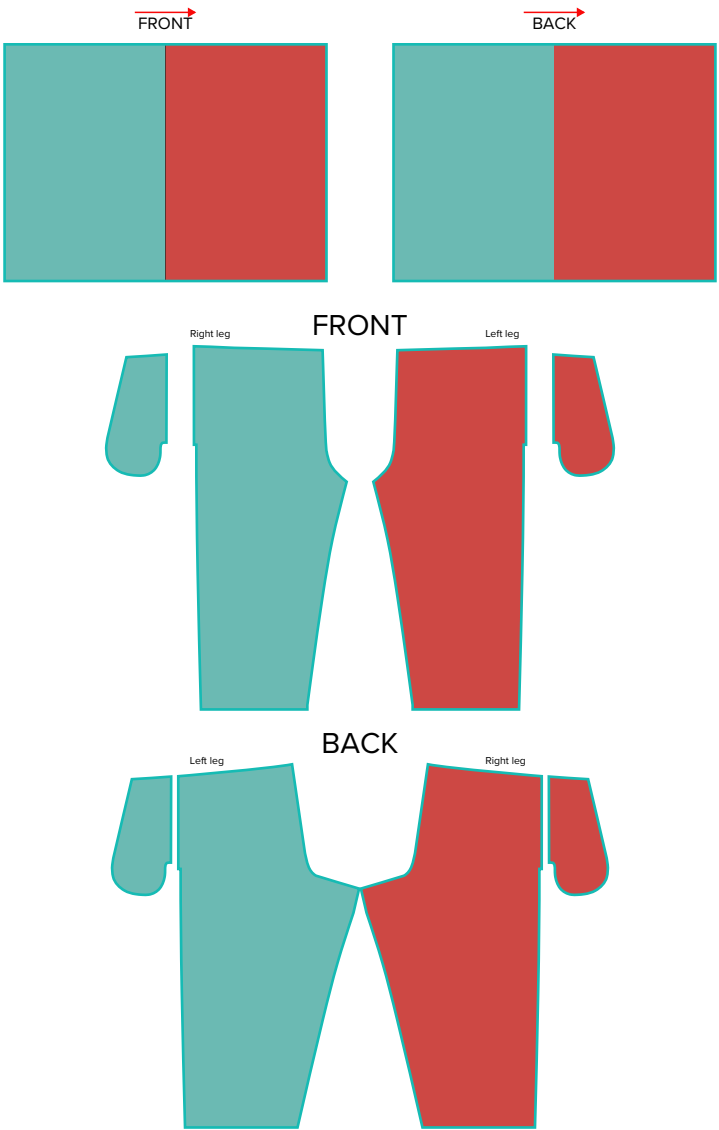
HOW PANTS WILL LOOK IF YOU
FLIP DESIGN TO MIRROR

PRINT FILE



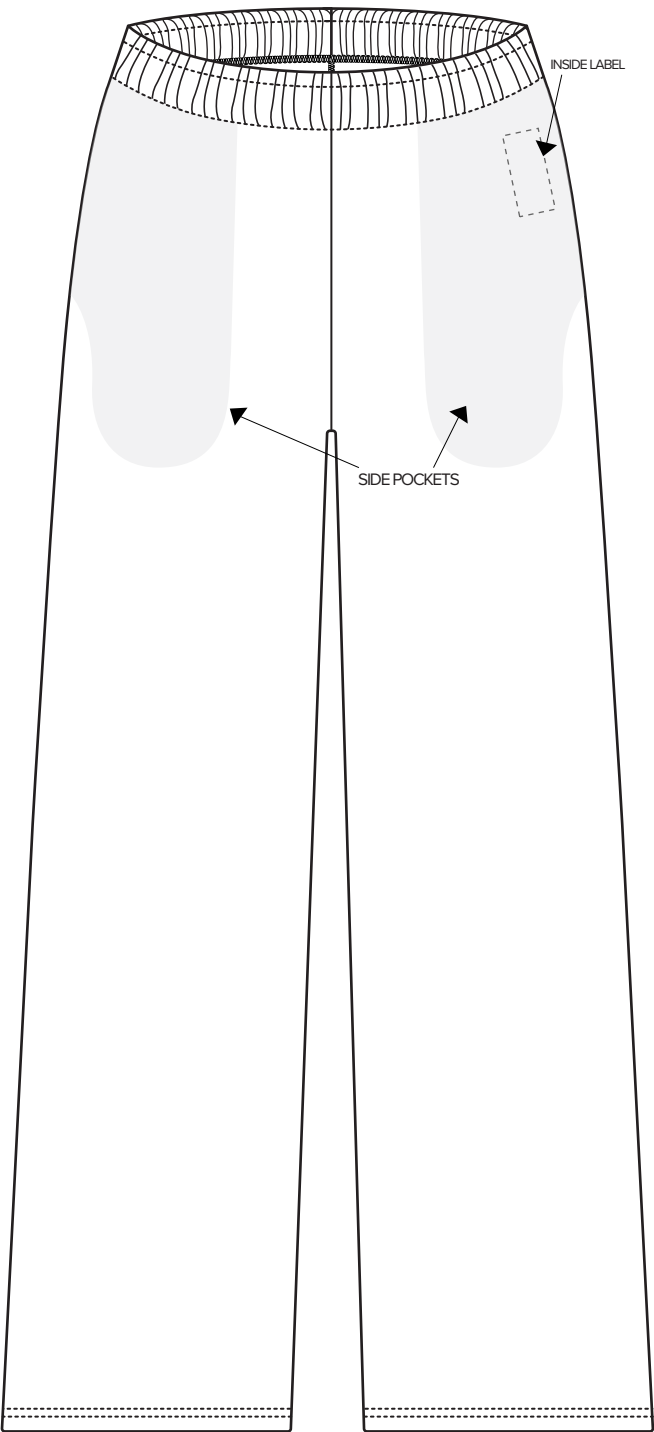
THIS IS HOW PANTS WILL LOOK IF YOU
DON'T FLIP DESIGN TO MIRROR

PRINT FILE

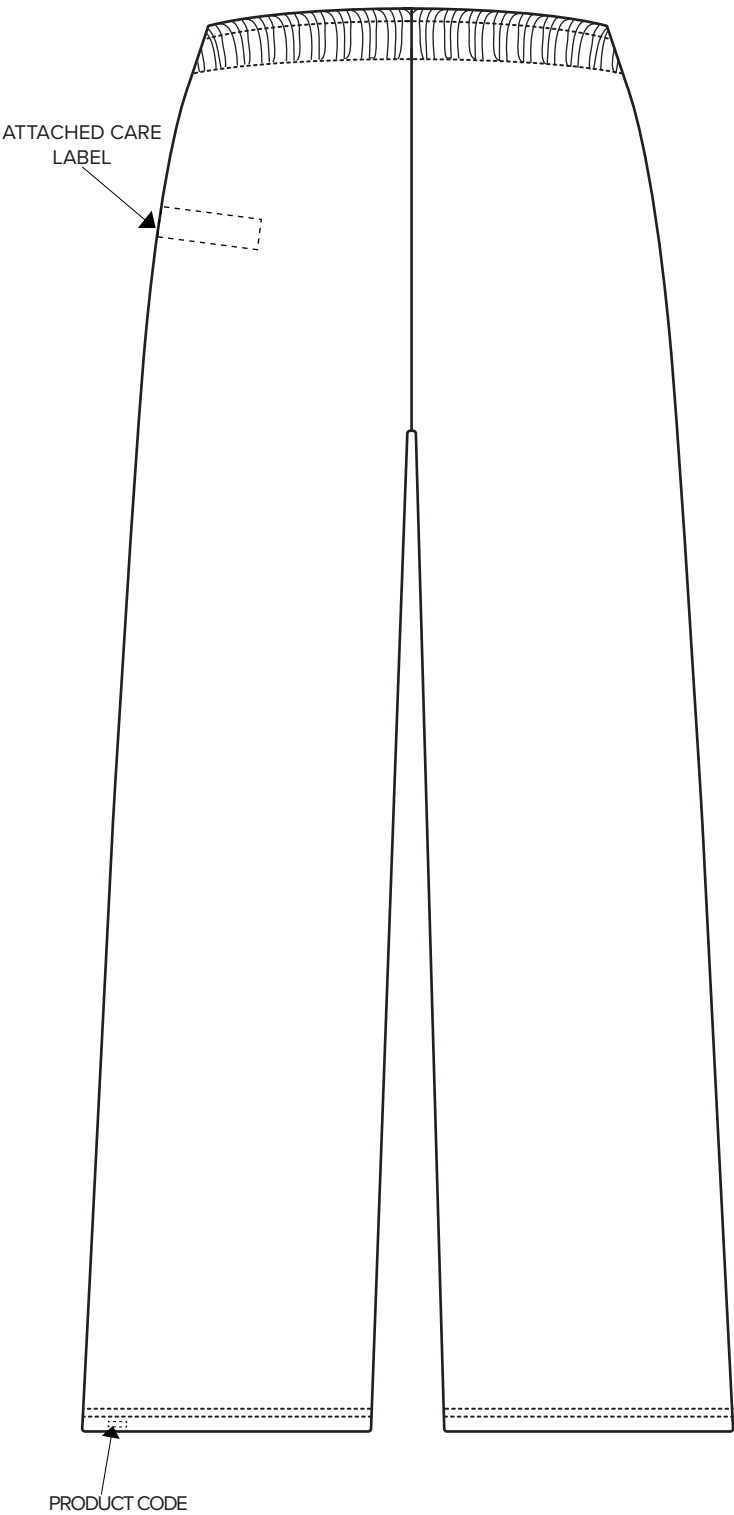


TECHNICAL DRAWING AND DETAILS

FRONT



BACK



HOW TO PREPARE PRINTFILES



FILE FORMAT

Please submit your files in JPG, PNG or PSD format.



FONTS

All fonts in the print files should be converted to outlines so you don't have to send over the font files.



COLOR

All colors should be in RGB.



PLACEMENT

Exact placement is not possible. Our T-shirts are cut and sewn and are best when designed with patterns and full bleed images. Text placement will not be precise. Making a seamless image in the front or back is impossible.



Adobe Photoshop

1 **OPEN** The Printful templates for this product or **CREATE** new documents

2 Create or copy / paste graphics within maximum graphic size area.
Pay attention to graphics resolution.

3 **SAVE**

1. Turn off the guides by using the eye icon tool
2. Choose File - Save As and Rename your file
3. Save as **.jpeg**

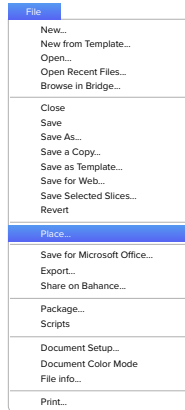


Adobe Illustrator

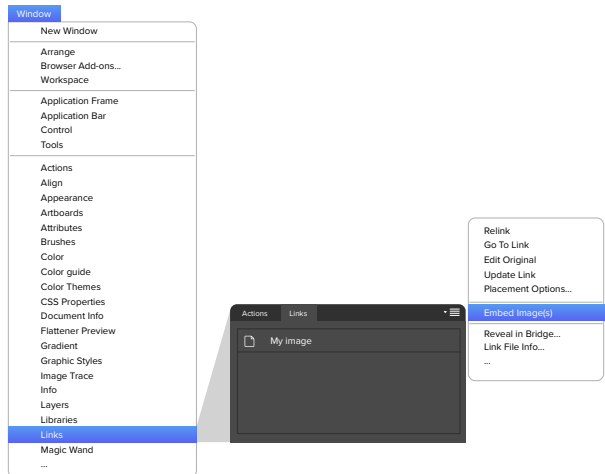
1 **CREATE** new document sized to **Width: 68" x Height: 50"**.

- Make sure Raster effects are set to **150dpi** or higher
- Make sure the color space is set to **sRGB**

2 **PLACE** raster graphics or create / copy & paste vector
Pay attention to graphics resolution (see requirements above).



3 **EMBED** raster graphics



4 **EXPORT**

1. Choose "File" - "Export"
2. Rename your file
3. Choose either **.png** or **.jpeg** as the file format
4. Click the **"Use Artboards"** checkbox
5. Click "Export"
6. Make sure your **resolution is 150dpi** or higher
7. Make sure the color space is set to **sRGB**
8. Click **"OK"** to save file



So much more than printing