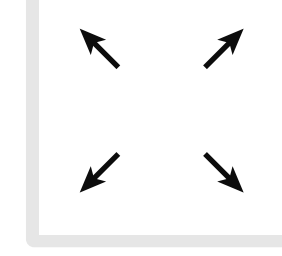


PRINTFUL
ALL-OVER PRINT
MEN'S BOXER BRIEFS

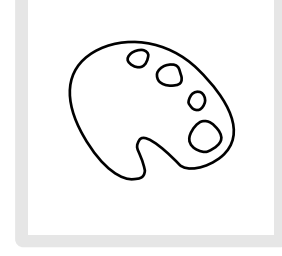
Print file size for **LEGS**
49" × **17"**
width height

Print file size for **FRONT POUCH**
and **CROTCH PANEL**
13" × **17"**
width height



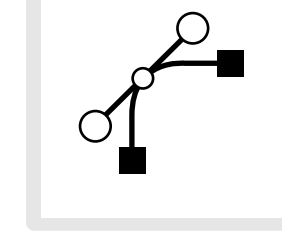
RESOLUTION

Graphics should be at **least 150 dpi**



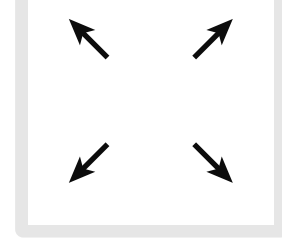
COLOR

All colors should be in **sRGB**.



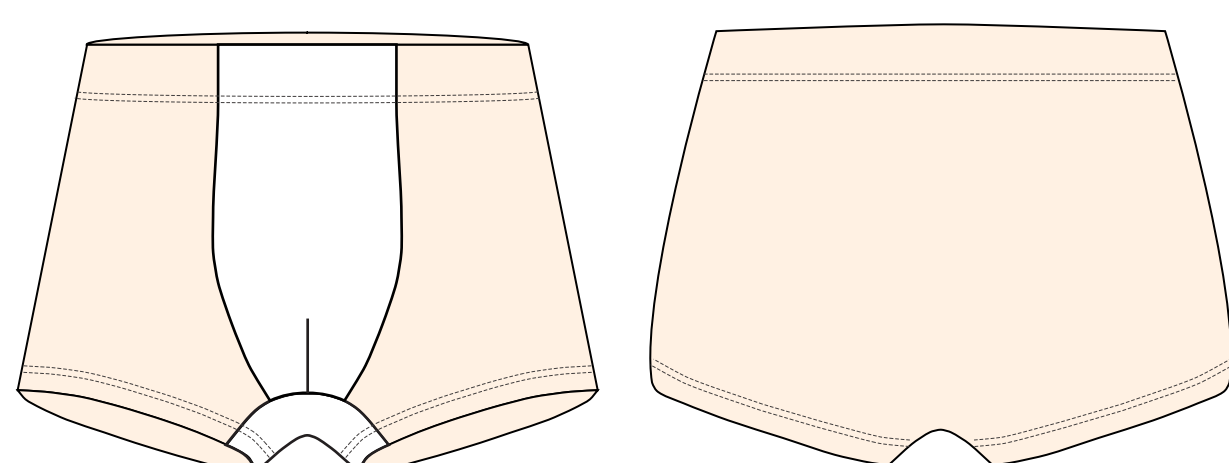
FILE FORMAT

Please submit your files in **.PNG** or **.JPEG** format

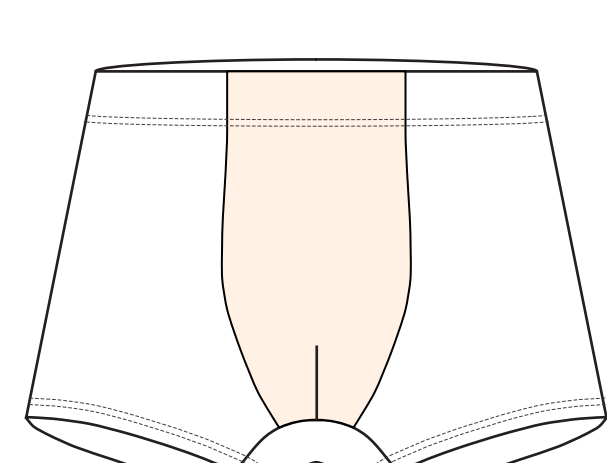
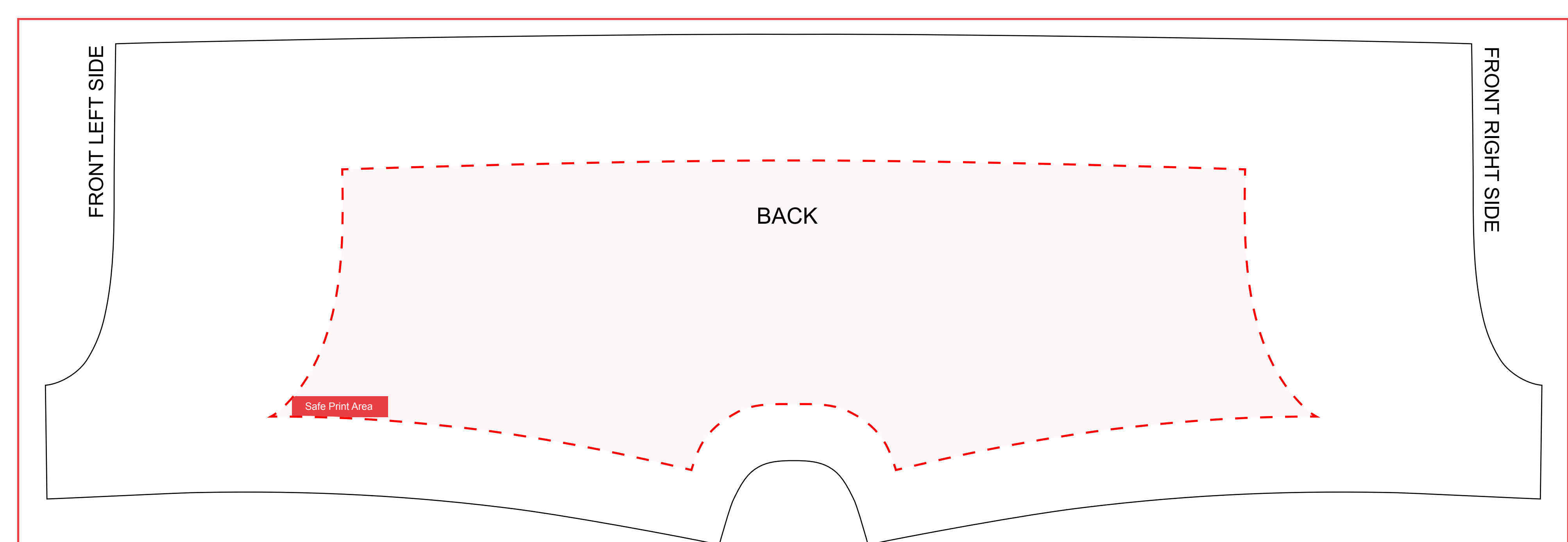


PLACEMENT

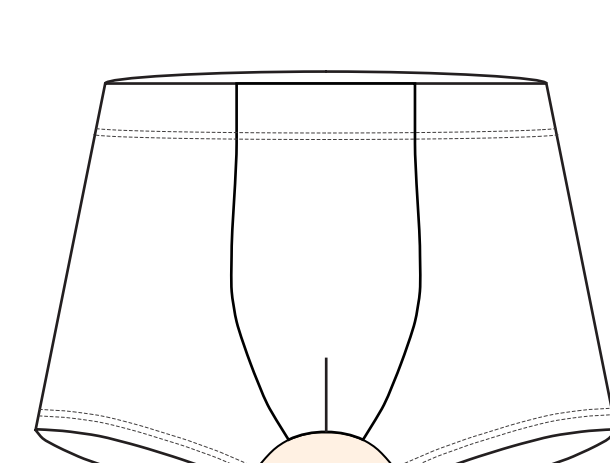
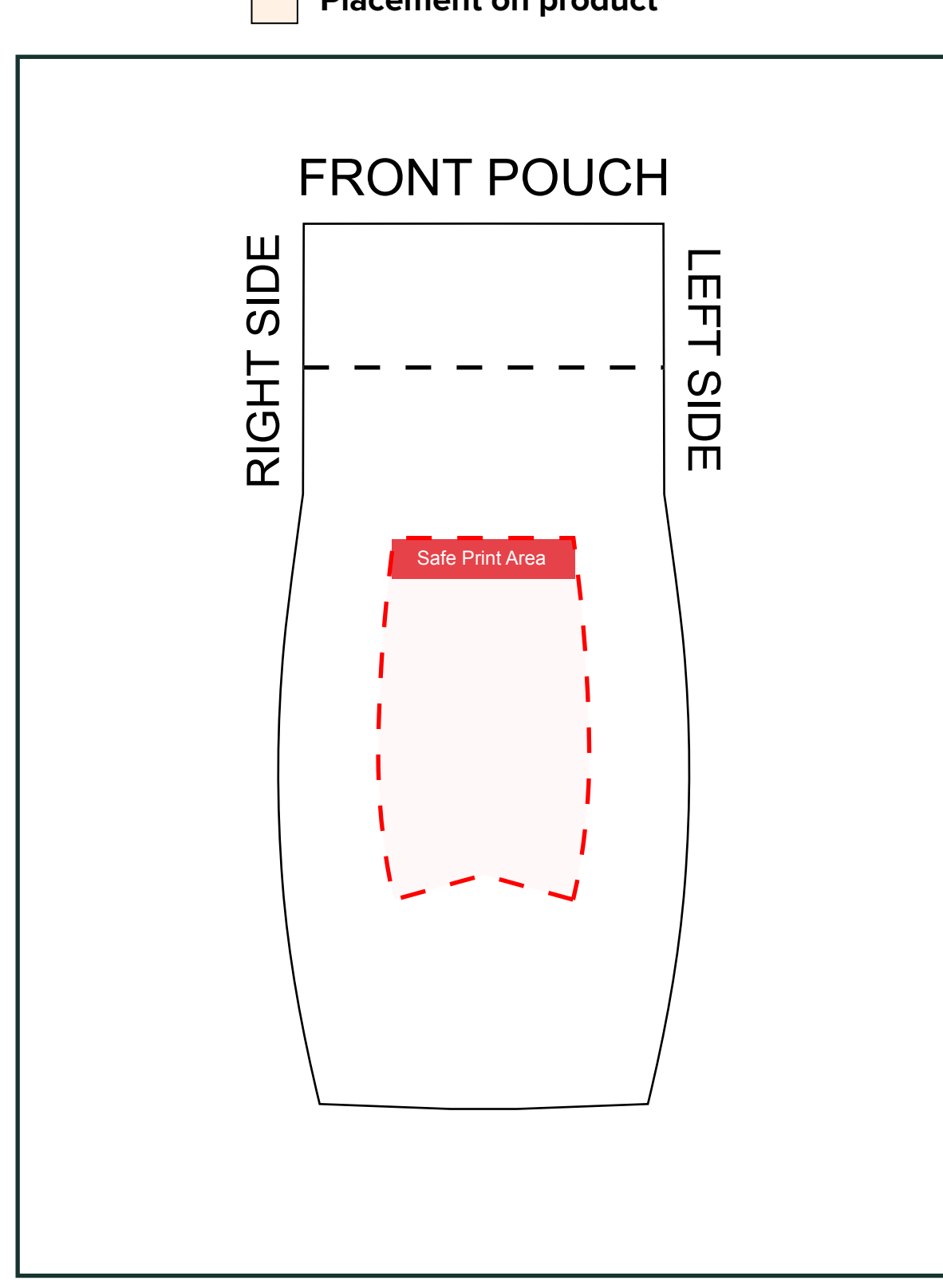
Exact placement is **not possible**. Making a seamless image that goes from front to back is not possible. We cannot guarantee exact graphic and text placement nor alignment on seams.



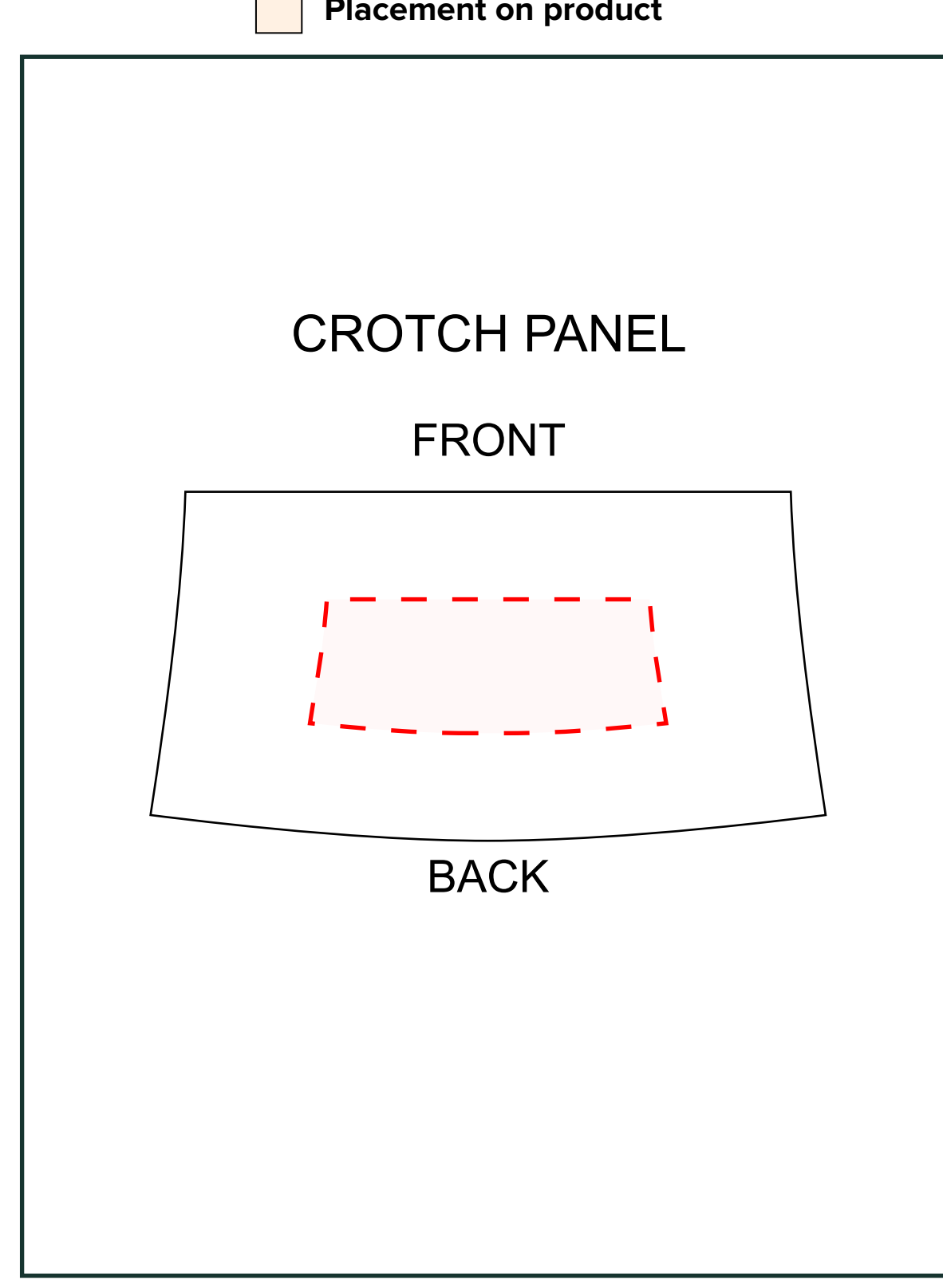
Placement on product



Placement on product



Placement on product



NOTE: IF YOU WISH YOUR DESIGN TO MATCH ON SIDES
FLIP IMAGE TO MIRROR

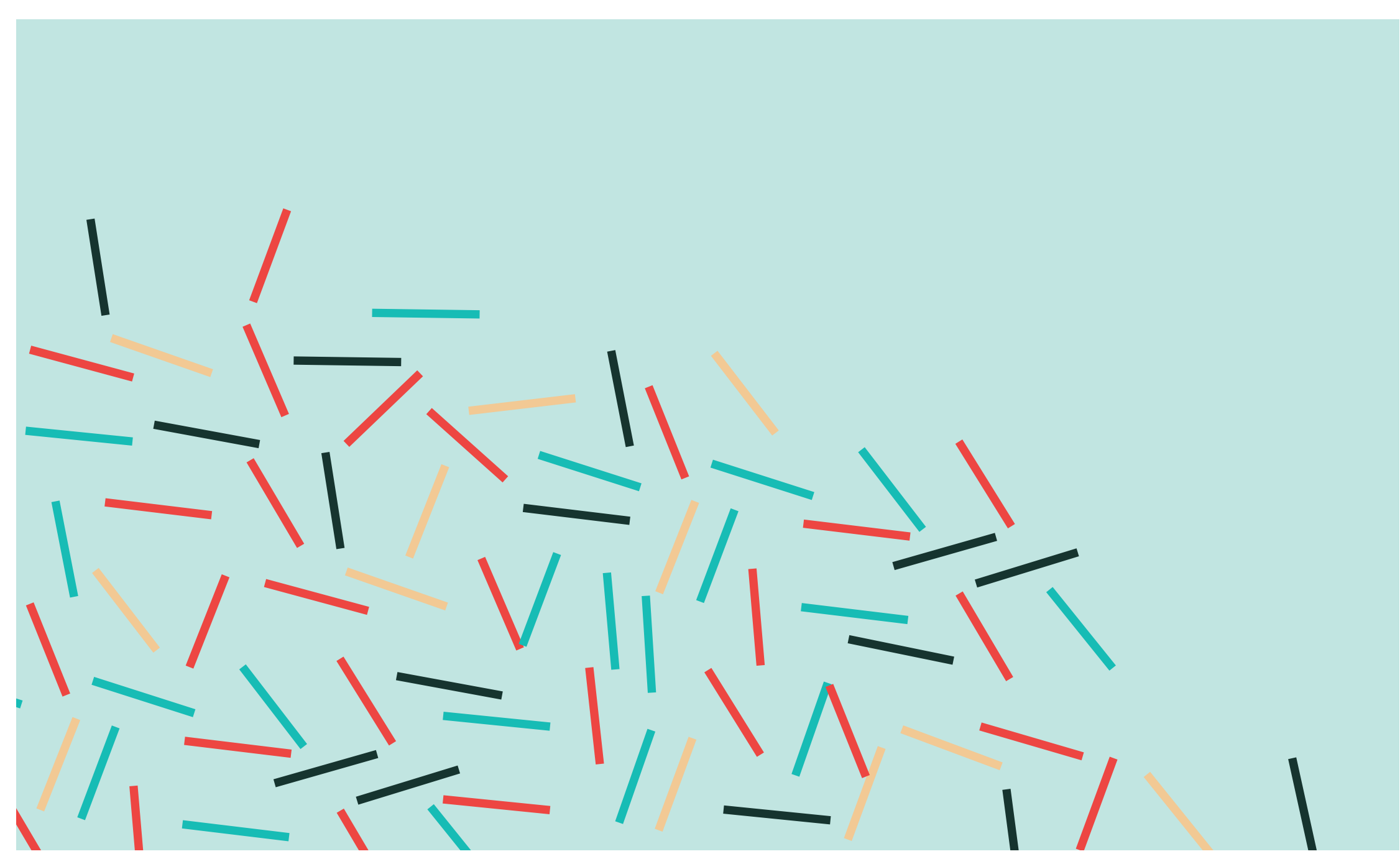
THIS IS HOW GARMENT WILL LOOK IF YOU FLIP DESIGN TO MIRROR

PRINT FILE

BASIC PART



FRONT POUCH AND CROTCH PANEL



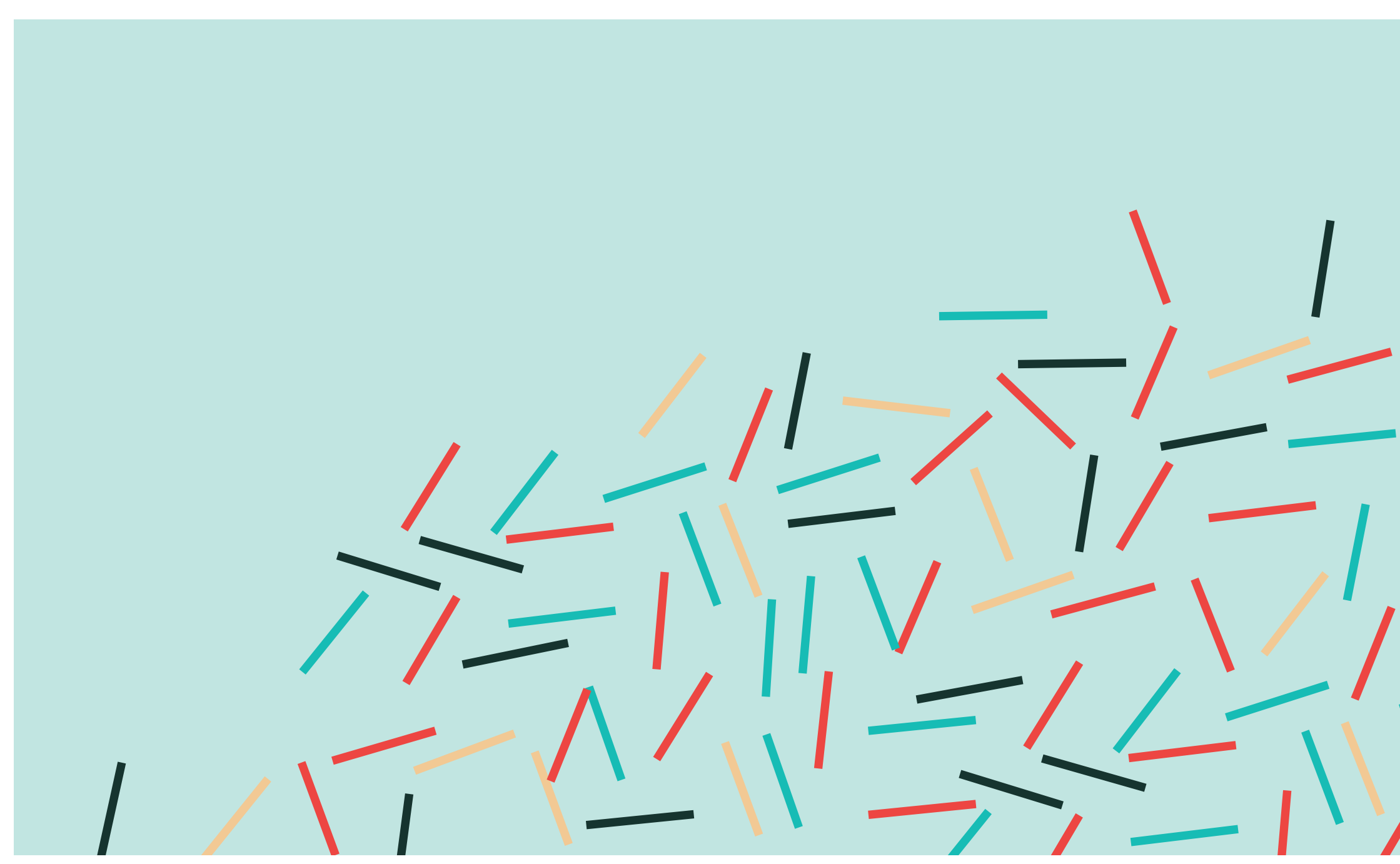
THIS IS HOW GARMENT WILL LOOK IF YOU **DON'T** FLIP DESIGN TO MIRROR

PRINT FILE

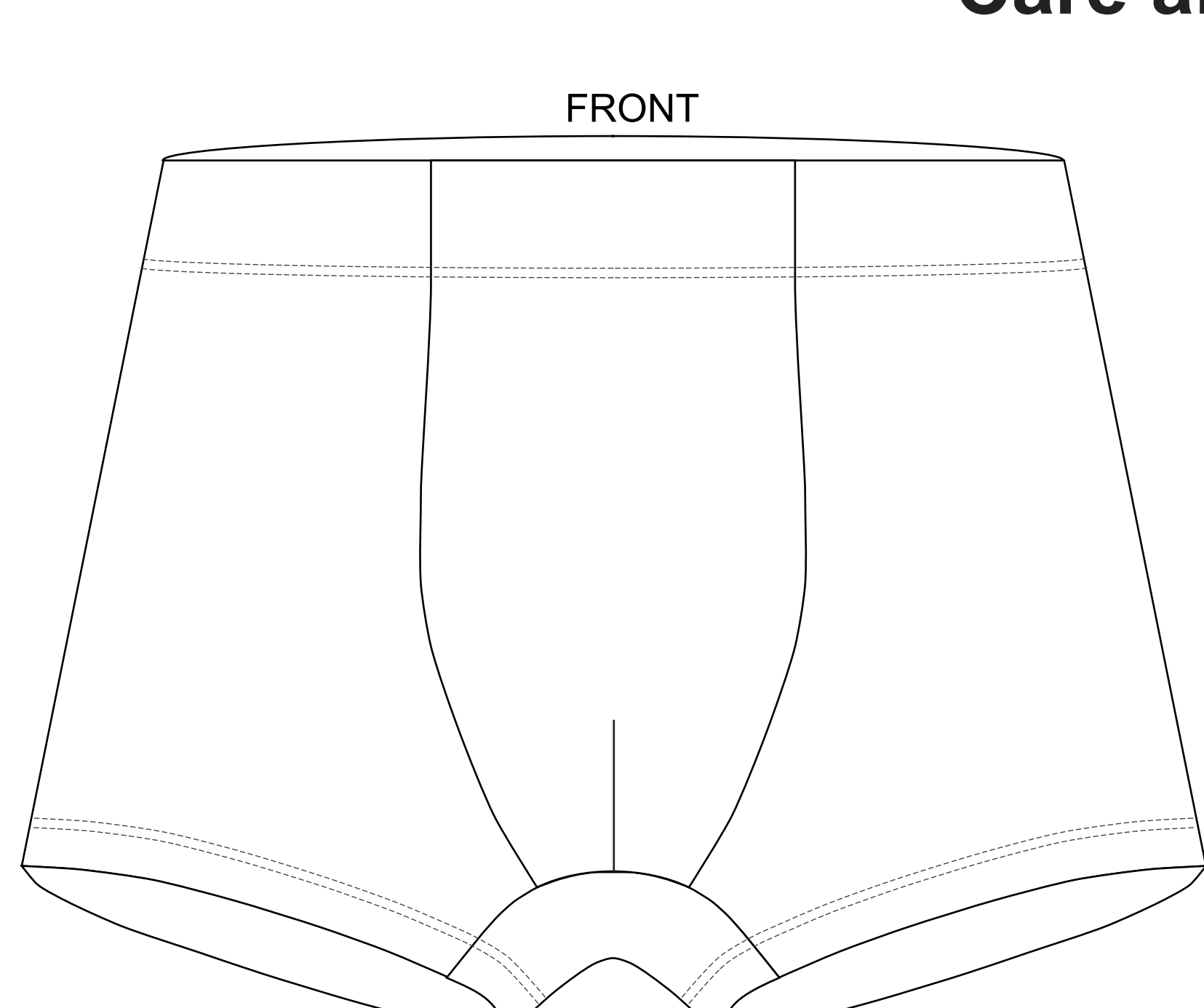
BASIC PART



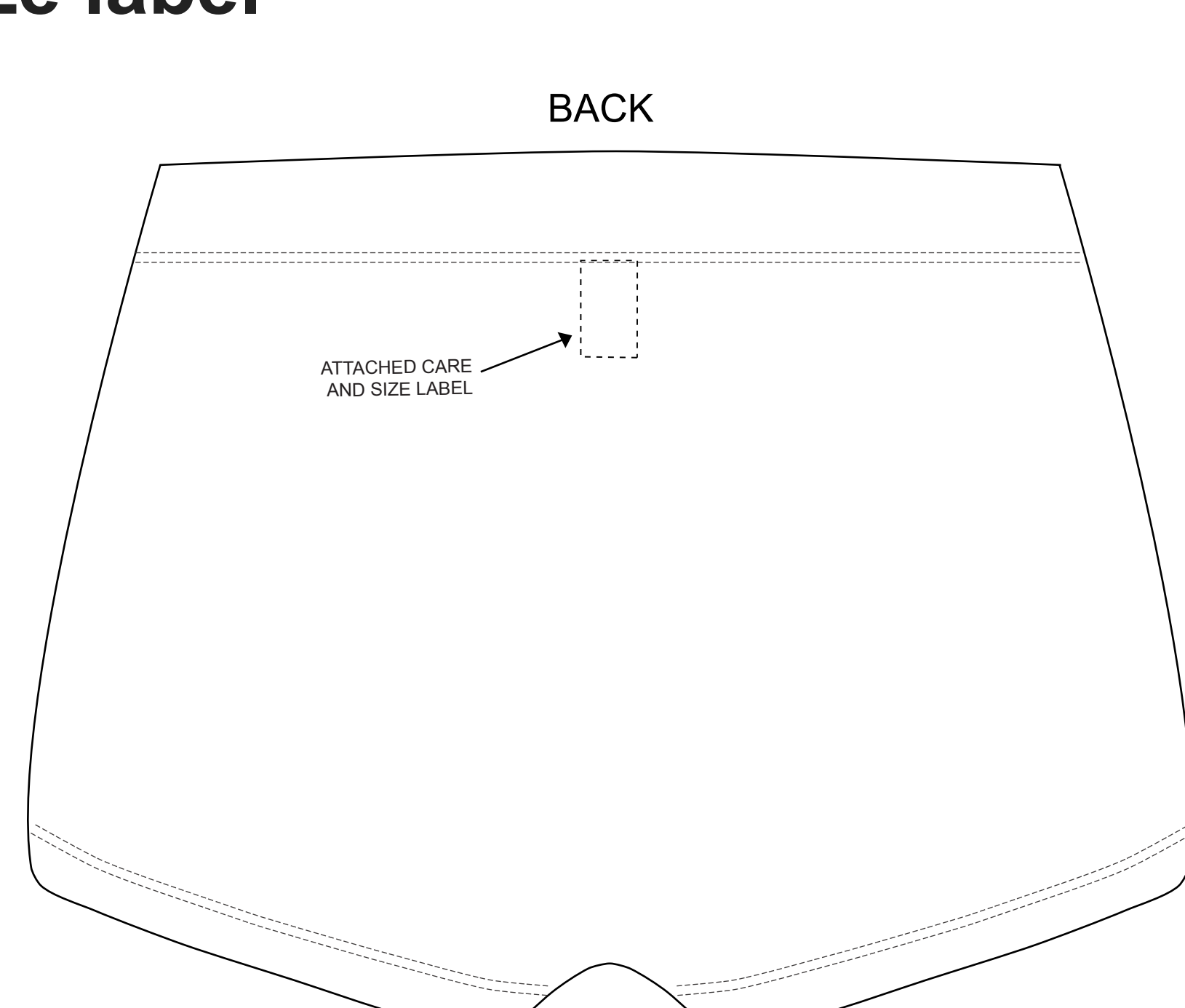
FRONT POUCH AND CROTCH PANEL



Care and size label



FRONT



BACK

Instructions on how to prepare a printfile

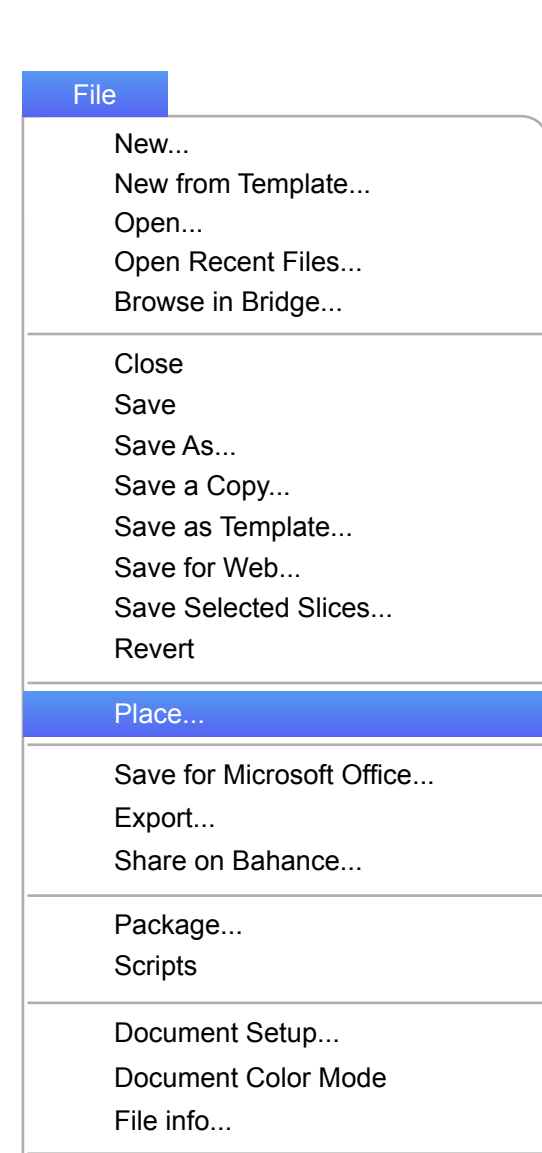


1 CREATE 2 new documents sized to **Width: 49" x Height: 17"** and **Width: 13" x Height: 17"**

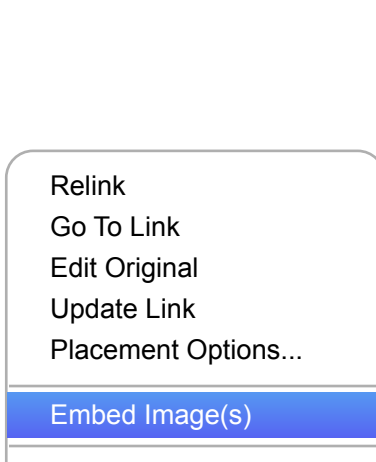
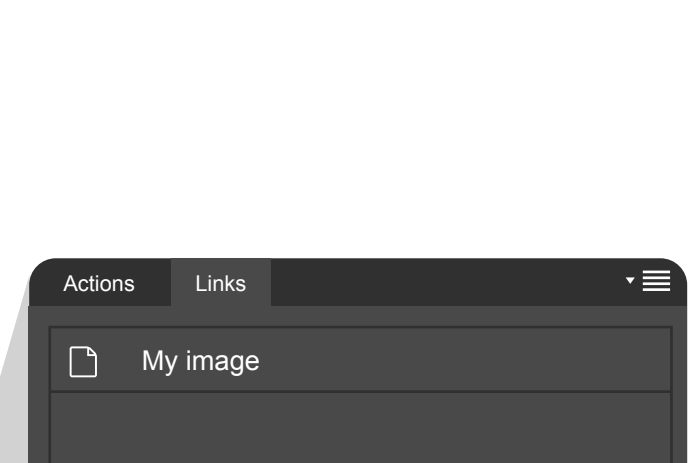
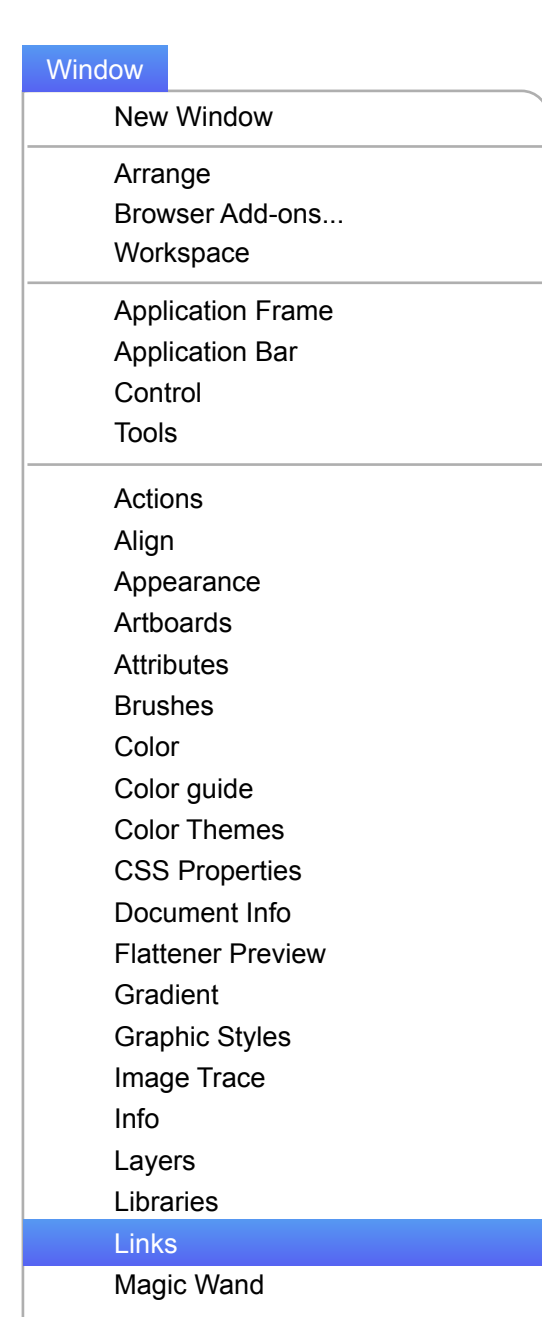
- Make sure Raster effects are set to **150dpi** or higher
- Make sure the color space is set to **sRGB**

2 PLACE raster graphics or create / copy & paste vector graphics within maximum graphic size area.

Pay attention to graphics resolution (see requirements above).



3 EMBED raster graphics



4 EXPORT

1. Choose "File" - "Export"
2. Rename your file
3. Choose either **.png** or **.jpeg** as the file format
4. Click the **"Use Artboards"** checkbox
5. Click "Export"
6. Make sure the **resolution is 150dpi** or higher
7. Make sure the color space is set to **sRGB**
8. Click **"OK"** to save file



1 OPEN The Printful templates for this product or **CREATE** new documents

2 Create or copy / paste graphics within maximum graphic size area.

Pay attention to graphics resolution.

3 SAVE

1. Turn off the guides by using the eye icon tool
2. Choose File - Save As and Rename your file
3. Save as .jpeg