



NEXT LEVEL

A P P A R E L™

Our Eco Ethos:

Our mission is to create a garment that destroys the notion of a disposable tee. In a generation fueled by a purpose-driven and mindful lifestyle, we have made it our mission to become more conscious of the vulnerability of the planet. It's not just because of the demand from clients but because the awareness of environmental welfare is top of mind at a macro level.

However, there is a need for more conversations and assessments as sustainability is merely at the development stage.

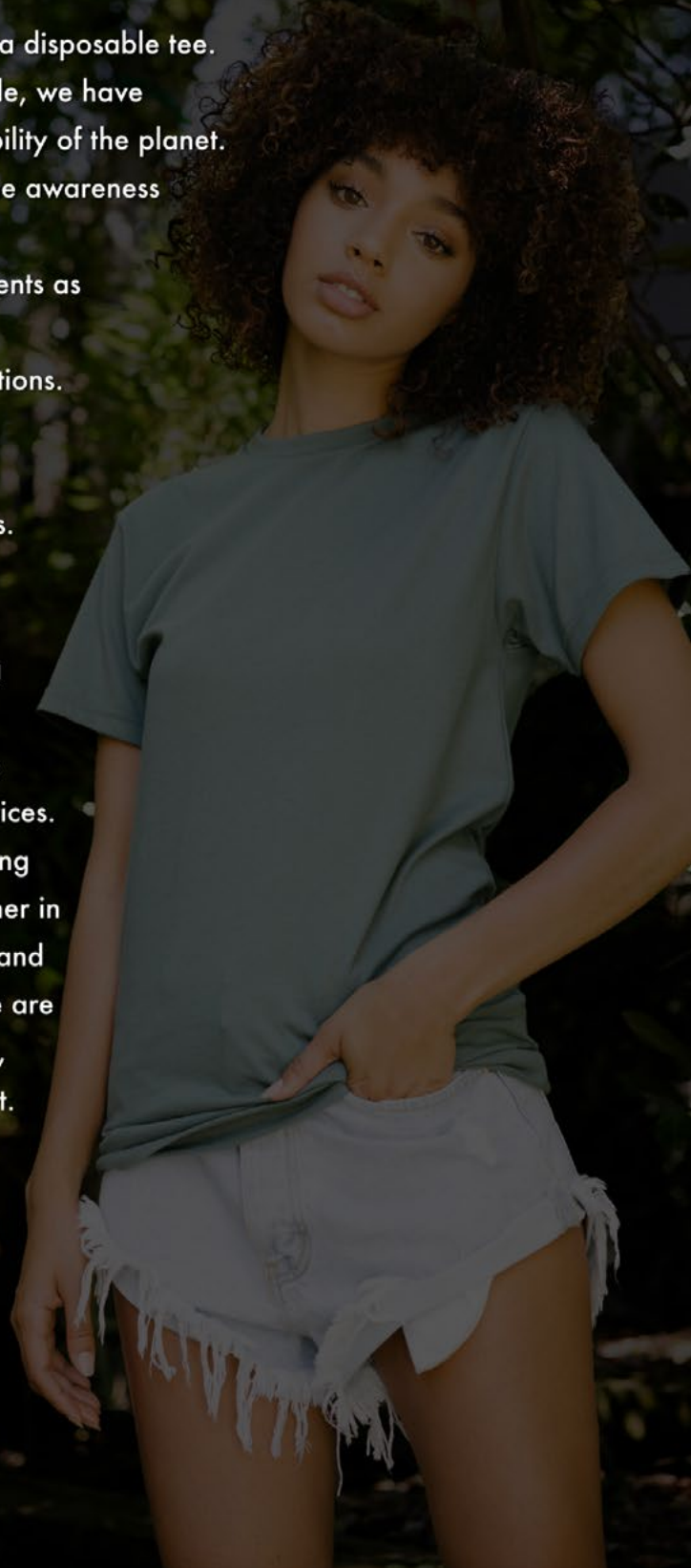
Next Level is committed to prioritizing this in all of their operations. All garments are supplied to distributors without the use of additional plastic bags and wrapping. Manufacturers must all comply with all applicable environmental laws and regulations.

Each member of our dynamic team is dedicated to following the CSPIA (Consumer Product Safety Improvement Act) testing standards. Next Level Apparel's WRAP certified (Worldwide Responsible Accredited Production) factories are committed to the highest ethical standards of conduct and best quality practices. We are driven to educate the players in this landscape including suppliers, manufacturers, and consumers to work better together in synergy and independently towards a higher level of welfare and sustainability. The first products added to the sustainability line are made of top quality, ultra-soft, recycled cotton, organic cotton, and made of approximately 3-4 recycled RPET bottles per shirt. The comfort and versatility of the styles are true to our motto, create a t-shirt you can live in.

Don't just live in our t-shirts, make a difference.



NEXT LEVEL
APPAREL™



Style 4600 – UNISEX ECO HEAVY WEIGHT TEE

60% 20/1 Organic Cotton and 40% Recycled Poly (RPET)

- Usage of RPET

- o Since PET is considered highly recyclable plastic, PET can be washed and re-melted into plasma from which new items can be created or crafted.
- o Only around 7% of the recycled bottles used back as bottles.
- o The rest are used as polyester fabric. This polyester fabric is seen in clothing like t-shirt and leggings; back-packs and grocery bags.

- Interesting Facts about RPET (from the planet bottle)

- o Cubic yards conserved in a landfill by recycling PET beverage bottles:

4,800 recycled 16-ounce bottles
saves a cubic yard
4,050 recycled 20-ounce bottles
saves a cubic yard
3,240 recycled 1-liter
bottles saves a cubic yard
2,430 recycled 2-liter
bottles saves a cubic
yard
1,350 recycled 3-liter
bottles saves a cubic
yard

- o Recycling a ton
of PET containers saves
7.4 cubic yards of
landfill space.



Style 4210 – UNISEX ECO PERFORMANCE

30% Recycled Cotton 30% Cotton 40% Recycled Poly (RPET)

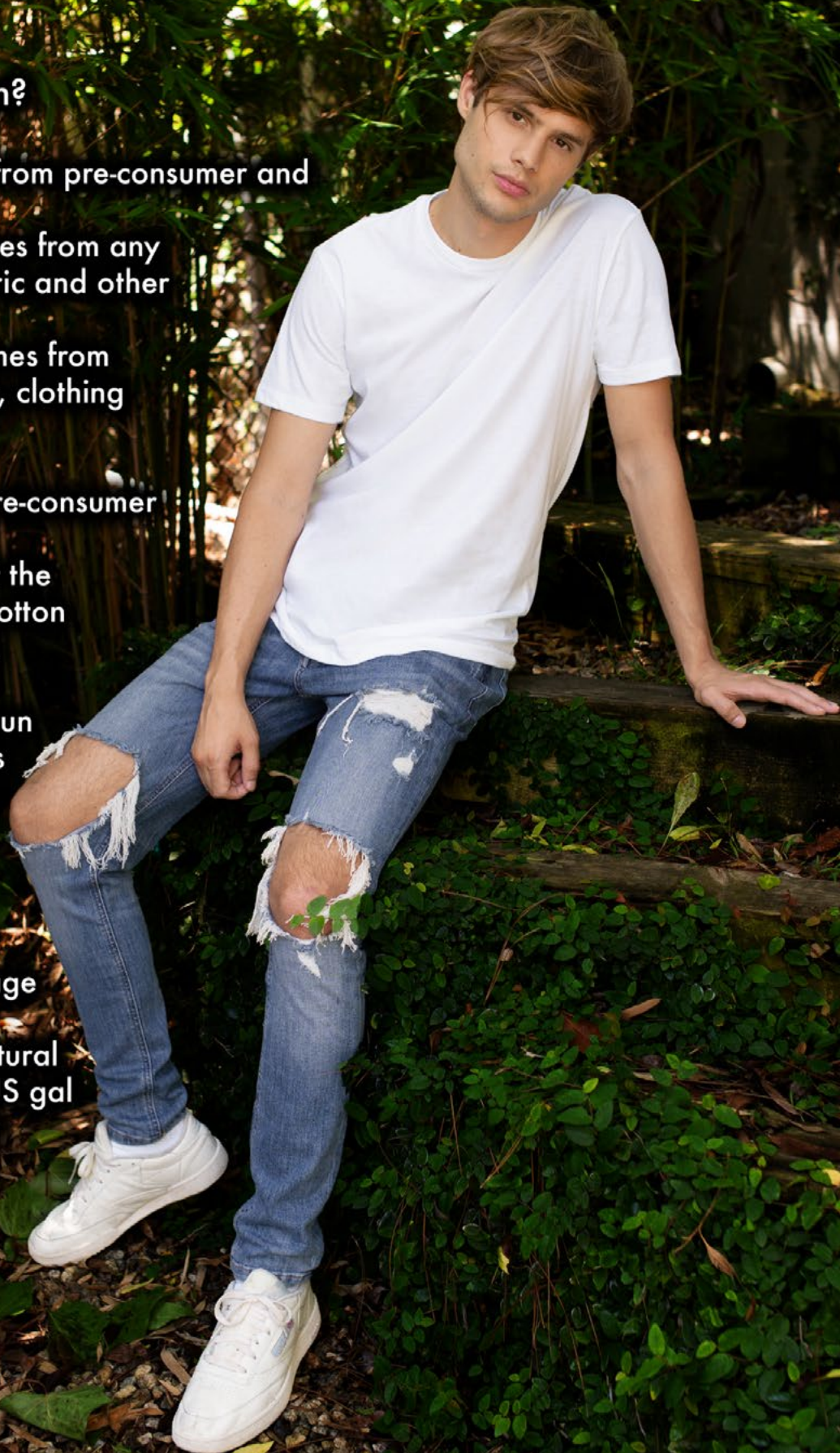
- What is Recycled Cotton?

- Cotton can be recycled from pre-consumer and post-consumer waste.
- Pre-consumer waste comes from any excess material like yarn, fabric and other textile products.
- Post-consumer waste comes from discarded textile products like, clothing or home textiles.
- For this style, we used Pre-consumer waste.
- The process is to convert the pre-consumer waste back to cotton fiber by mechanical recycling.

After sorting, the fabrics are run through a machine that shreds the fabric into yarn and further into raw fiber.

- Why recycled Cotton

- Prevents unneeded wastage
- Alternative to disposal
- Significant savings of Natural resources (savings 202,000 US gal of water when recycling 1 ton of Cotton)
- Reduce pollution from agriculture



M100 - ECO ADULT FACE MASK

- PPE: M100 face masks made from our eco-friendly t-shirt material delivers an astonishing 93.6% PFE protection. RPET poly from recycled bottles – each mask removes approximately one bottle from landfill.
- Next Level has teamed up other USA-based apparel brands and Dr. Peter Navarro, assistant to the President and Director of the White House Office of Trade and Manufacturing to fill the national stockpile with surgical masks.
- Made from a proprietary fabric with a chemistry finish that is both FDA-approved and HHS-certified.
- This is the only program to have these designations which has been distributed to hospitals and health care workers.
- We have partnered with City of Hope as our official philanthropy partner. COH is a comprehensive research and treatment center, caring for COVID-19 patients and working on a vaccine.



M101 - ECO YOUTH FACE MASK

- M101 Face Mask is a reusable, eco-friendly, and sustainable 2-ply mask made of 70% recycled material. Each mask is made from approximately 1 recycled poly (RPET) water bottle.
- Moisture wicking fabrication is washable and breathable. Features a double layer fabric that wraps around the ears, one size fits most.

